

Gotthard Basistunnel, Switzerland

The project:

Railway Tunnel Alptransit Gotthard,
Sedrun Section

Executing companies:

ARGE Transco Sedrun
Batigroup AG Tunnelbau,
Frutiger AG
Impresa Pizzarotti & C.S.p.

The "Sedrun Section" of the Gotthard Basistunnel encompasses two tunnels that are each 6,2 kilometres long and supplied through a 800m deep mine shaft. Two tunnels are at the base of the shaft and each breaks through to the north and south in the conventional manner.

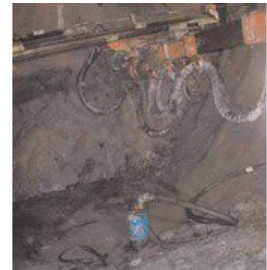
The project tunnels through the unstable rock of the Tavetscher Zwischenmassiv with an up to 2.000m overlay. One of the two multifunctional sections of the 57 km long Gotthardbasis Tunnel is also being built in the Sedrun section.

The problem:

Pumping off the abrasive water that collects during the tunnelling excavations.

Our solution:

Use of the current 80+ Tsurumi wastewater submersible pumps for complete drainage.
Pump series used: KTZ, KRS, KTV, LH, KRS with agitator.



Specifikacije KRS: <https://www.tsurumi.eu/sh-ME/krs>

Specifikacije KRS2: <https://www.tsurumi.eu/sh-ME/krs2>

Specifikacije KTV: <https://www.tsurumi.eu/sh-ME/ktv>

Specifikacije KTZ: <https://www.tsurumi.eu/sh-ME/ktz>

Specifikacije LH: <https://www.tsurumi.eu/sh-ME/lh>

In the event of abrasive and corrosive utilization, stronger wear and tear will take place naturally in certain components. With regards to the above application wear and tear can take place mainly in impeller, agitator, suction plate, shaft sleeve, oil ring, mechanical seal, pump casing, strainer, motor casing and discharge coupling. Depending on the working conditions the lifetime of those parts might vary significantly and can be shorter than the legal warranty period.

In this regard, please pay attention to our [general terms and conditions](#) that we also send to you by mail on request.

