

Discharge bore mm	Phases	Motor output kW	Head max. m	Capacity max. l/min	Max. solid handling ø mm	ATEX available	PH value
50	1	1,8	32,1	360	-	Yes	5.0-9.0

GENERAL

ø Discharge bore mm
Discharge Connection
Optional Accessories

50mm
Flange DIN/ANSI DN50 (PN10)
Guide rail fitting "TOS" (guide support, duck foot bend, lifting chain) / Bend and stand set for free standing types

PUMPING FLUID

Temperature
Type of Fluid

0-35°C
Municipal sewage

MOTOR

Lubrication
Motor Protector (built-in)
Type, Poles
Insulation
Phase / Voltage

Turbine oil (ISO VG32)
Miniature protector
Induction motor, 2 poles, IP68
Insulation class H
Single phase 230V / 50Hz

MATERIAL

Casing
Shaft
Cable

Grey iron casting EN-GJL-250
Stainless steel
EN-X5CrNiMo17-12-2
Rubber, 10m H07RN8-F

PUMP

COMPONENTS

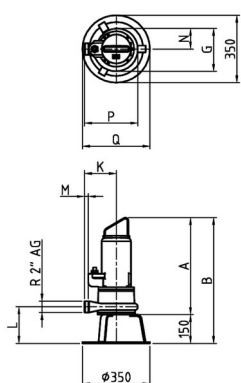
Impeller
Shaft Seal
Bearings

Multi-vane channel impeller with cutting mechanism
Double mechanical seal
Shielded ball bearings

MATERIAL

Impeller
Casing
Shaft Seal
Cutting device

Grey iron casting EN-GJL-250
Grey iron casting EN-GJL-250
SiC, upper in oil bath
Stainless steel EN-X39CrMo17-1



50GY21.8S

Model	A	B	G
50GY21.8S	468	618	223

Please mind: discharge bend, duck foot bend and stand set are accessories and must be ordered separately