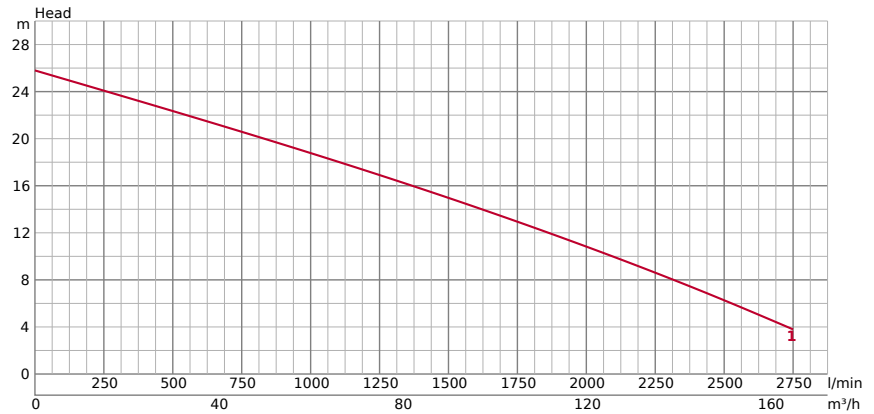


100C411



TECHNICAL INFORMATION

GENERAL

∅ Discharge bore mm	100mm
Discharge Connection	Inside thread, JIS10K flange

PUMPING FLUID

Type of Fluid	Sewage
Temperature	0-40°C
Max. Solid Handling mm	82 x 75
Max. PH Value	5-9
Max. Capacity l/min	2750
Max. Head m	25.80

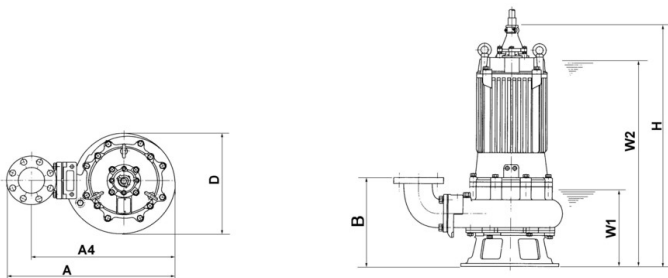
TECHNICAL INFORMATION | Pump, Motor, Others on the next page →

PUMP	COMPONENTS		MATERIAL	
	Impeller	Non-clog impeller with cutter mechanism	Impeller	Grey iron casting EN-GJL-200 with sintered tungsten carbide alloy tip
	Bearings	Shielded ball bearings	Casing	Grey iron casting EN-GJL-200
	Mechanical Seal	Dual mechanical seal in oil bath	Suction Plate	Ductile iron casting EN-GJS-700-2
		Pump Body	Grey iron casting EN-GJL-200	
		Mechanical Seal	Silicon Carbide	

MOTOR			MATERIAL	
	Motor output kW	11	Frame	Grey iron casting EN-GJL-200
	Starting method	star/delta	Shaft	Stainless steel EN-X30Cr13
	Suitable for VFD	Yes	Cable	NSSHÖU 4C*2.5mm ² / NSSHÖU 3C*2.5mm ² / 2PNCT 2C*1.25mm ²
	Suitable for Soft Starter	Yes	Cable Length	10m
	Type, Poles	Induction motor, 4 poles, IP68		
	Insulation	Insulation class F		
	Phase / Voltage	3-phase / 400V / 50Hz		
	r.p.m.	1455		
	Motor Protector (built-in)	Circle thermal cut-out		
Rated Current	23.40			

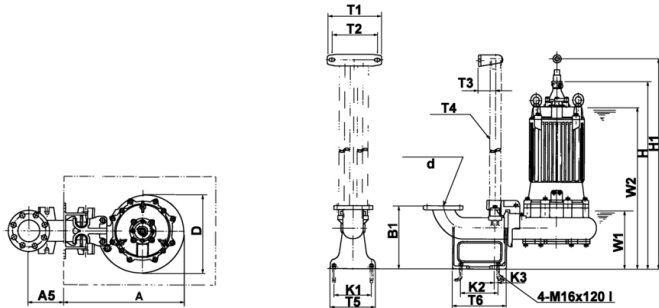
OTHERS		
Dry Weight Kg	179	
Pressure Resistance	max. 40m	

DIMENSIONS



DIMENSIONS - IN MM					
A	710	D	431	W1	300
A4	605	H	1000	W2	840
B	372				

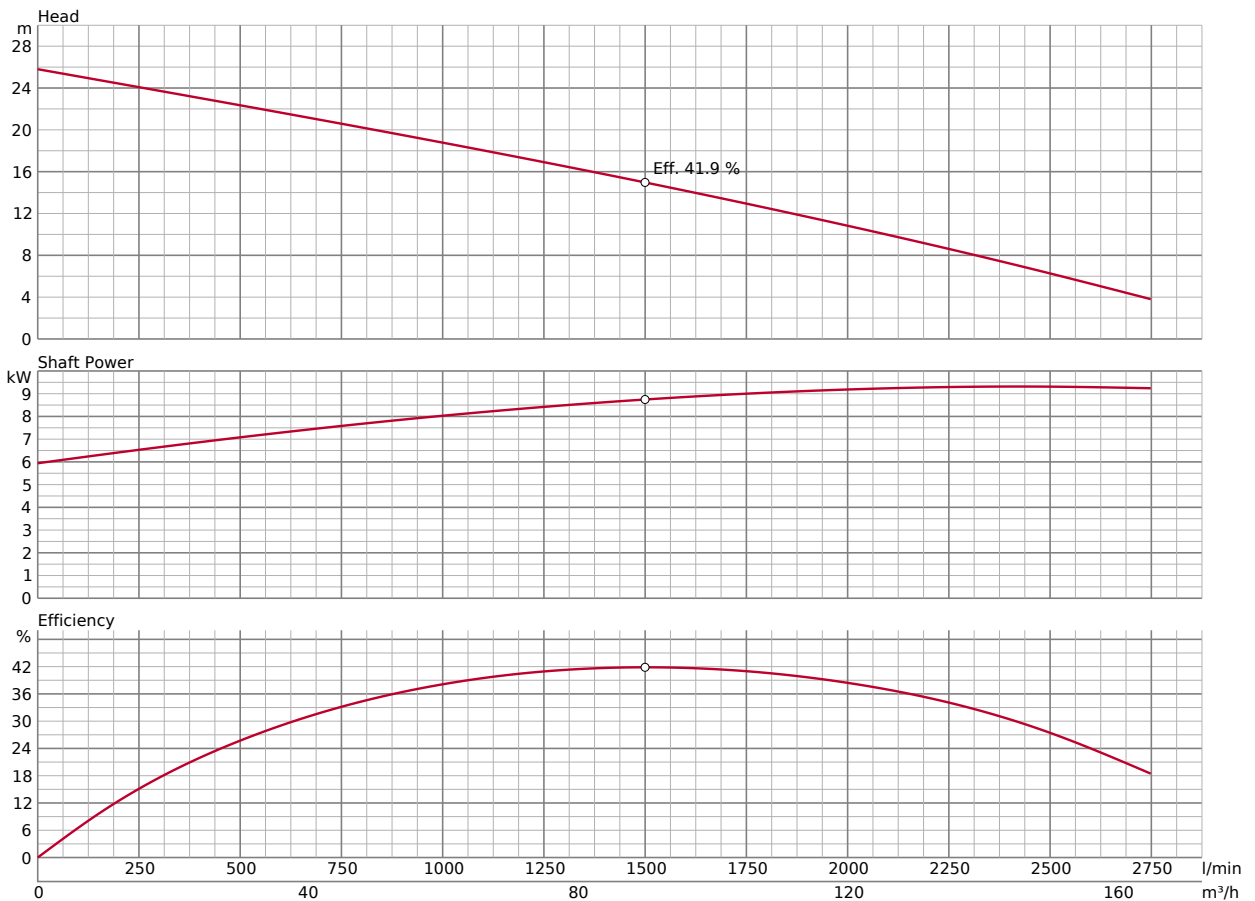
DIMENSIONS | GUIDE RAIL FITTING TYPE



DIMENSIONS | GUIDE RAIL FITTING TYPE - IN MM

A	642	H	934	W1	300
A5	181	H1	1265	W2	805
D	431				

PERFORMANCE CURVE



Please mind: discharge bend, duck foot bend and stand set are accessories and must be ordered separately

ACCESSORIES

PUMP DISCHARGE 048-108-10 + 121-105-33 (1x) + 140-130-36 (8x)
3" Screwed Flange JIS10Kx80mm

3" screwed-in mating flange

OIL LEAKAGE SENSOR TSS-TEG-10

TSS Seal Oil Sensor M10 (10m)

Externally mounted leak sensors for water detection inside of oil chamber. Please note, an additional relay e.g. finder needs to be installed.



FLOAT SWITCH 106-TEG-01

Float 10m (for Sewage Pumps) from 3.7kW

Automatic Operation: Activates the submersible pump when water levels rise to a preset height and deactivates it when levels drop, preventing overflow or pump damage.



ACCESSORIES

FLOAT SWITCH **106-TEG-02**

Float 20m (for Sewage Pumps) from 3.7kW

Automatic Operation: Activates the submersible pump when water levels rise to a preset height and deactivates it when levels drop, preventing overflow or pump damage.



MOTOR PROTECTION PLUGS **547252503tu**

Plug CEE 32 A

SPECIFICATIONS

Amperage Control	20,0A - 25,0A	IP	44
Cable Gland	M32		

Rotary lever actuation, motor protection with adjustment of the respective rated current, with phase turner and rotary field control, cable gland, Overload Protection: Automatically disconnects the motor in case of excessive current draw, preventing over



MOTOR PROTECTION PLUGS **587252503**

CEE MS PW Stecker 32/5 6h 20-25A DFK IP67

SPECIFICATIONS

Amperage Control	20,0A - 25,0A	IP	67
Cable Gland	M32		

Rotary lever actuation, motor protection with adjustment of the respective rated current, with phase turner and rotary field control, cable gland, Overload Protection: Automatically disconnects the motor in case of excessive current draw, preventing over



ACCESSORIES

MOTOR PROTECTION PLUGS **9216210**

Plug with float connection CEE 32A w/z rotary switch

SPECIFICATIONS

Amperage Control	20,0A - 25,0A	IP	54
Cable Gland	M32, 2 x M16		

rotary switch (I-0-II), protection with adjustment of the respective rated current, contactor: 12,5kW, with phase inverter, operating display and rotation field check, 2x cable gland M16, 1x M32 Overload Protection: Automatically disconnects the motor in



FREE STAND INSTALLATION KIT **(U)XIBEND44T**

BEND 100-100

Discharge/elbow for vertical pumping



FREE STAND INSTALLATION KIT **XISTAND**

STAND SET

Device for free standing installation



ACCESSORIES

GUIDE RAIL FITTING SYSTEM (U)XTOS310TA TOS3-100-100

TOS is the basic guide-rail fitting system for Tsurumi pumps up 150mm discharge bore.

