

Discharge bore mm	Phases	Motor output kW	Head max. m	Capacity max. l/min	Max. solid handling ø mm	PH value
100	3	11	19,0	2600	100	5.0-9.0



## GENERAL

ø Discharge bore mm	100mm
Discharge Connection	Inside thread, JIS10K flange
Optional Accessories	Guide rail fitting "TOS" (guide support, duck foot bend, lifting chain) / Bend and stand set for free standing types

## PUMPING FLUID

Temperature	0-40°C
Type of Fluid	Municipal sewage, water with solids

## PUMP

## MOTOR

Lubrication	Turbine oil (ISO VG32)
Motor Protector (built-in)	Circle thermal cut-out
Type, Poles	Induction motor, 4 poles, IP68
Insulation	Insulation class F
Phase / Voltage	3-phase / 400V / 50Hz / s.d.

## COMPONENTS

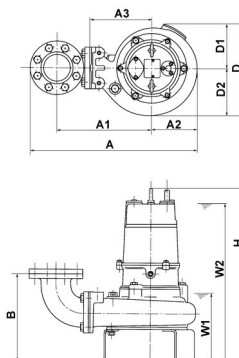
## MATERIAL

Casing	Grey iron casting EN-GJL-200
Shaft	Stainless steel EN-X30Cr13
Cable	Rubber, NSSHÖU

## MATERIAL

Impeller	Vortex impeller
Shaft Seal	Double mechanical seal
Bearings	Shielded ball bearings
Impeller	Grey iron casting EN-GJL-200
Casing	Grey iron casting EN-GJL-200
Shaft Seal	Silicon carbide in oil bath

100UZ411



Model	A	A1	A2	A3	B	D	D1	D2	H	W1	W2
100UZ411	660	387	168	230	337	358	179	179	1021	335	865

Please mind: discharge bend, duck foot bend and stand set are accessories and must be ordered separately