

| | | | | | | |
|-------------------|--------|-----------------|-------------|---------------------|--------------------------|----------|
| Discharge bore mm | Phases | Motor output kW | Head max. m | Capacity max. l/min | Max. solid handling ø mm | PH value |
| 80 | 3 | 2,2 | 8,8 | 1395 | 80 | 5.0-9.0 |



GENERAL

| | |
|----------------------|--|
| ø Discharge bore mm | 80mm |
| Discharge Connection | Inside thread, JIS10K flange |
| Optional Accessories | Guide rail fitting "TOS" (guide support, duck foot bend, lifting chain) / Bend and stand set for free standing types |

PUMPING FLUID

| | |
|---------------|-------------------------------------|
| Temperature | 0-40°C |
| Type of Fluid | Municipal sewage, water with solids |

PUMP

MOTOR

| | |
|----------------------------|--------------------------------|
| Lubrication | Turbine oil (ISO VG32) |
| Motor Protector (built-in) | Circle thermal cut-out |
| Type, Poles | Induction motor, 4 poles, IP68 |
| Insulation | Insulation class E |
| Phase / Voltage | 3-phase / 400V / 50Hz / d.o.l. |

COMPONENTS

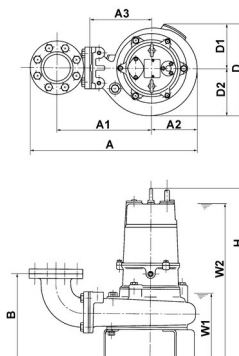
MATERIAL

| | |
|--------|------------------------------|
| Casing | Grey iron casting EN-GJL-150 |
| Shaft | Stainless steel EN-X30Cr13 |
| Cable | Rubber, NSSHÖU |

MATERIAL

| | |
|------------|------------------------------|
| Impeller | Vortex impeller |
| Shaft Seal | Double mechanical seal |
| Bearings | Shielded ball bearings |
| Impeller | Grey iron casting EN-GJL-200 |
| Casing | Grey iron casting EN-GJL-200 |
| Shaft Seal | Silicon carbide in oil bath |

80UZ42.2



| Model | A | A1 | A2 | A3 | B | D | D1 | D2 | H | W1 | W2 |
|----------|-----|-----|-----|-----|-----|-----|-----|-----|-----|-----|-----|
| 80UZ42.2 | 531 | 312 | 126 | 200 | 285 | 261 | 128 | 133 | 637 | 240 | 595 |

Please mind: discharge bend, duck foot bend and stand set are accessories and must be ordered separately