

Discharge bore mm	Phases	Motor output kW	Head max. m	Capacity max. l/min	Max. solid handling ø mm	PH value
80	3	1,5	7,5	1120	80	5.0-9.0



GENERAL

ø Discharge bore mm	80mm
Discharge Connection	Inside thread, JIS10K flange
Optional Accessories	Guide rail fitting "TOS" (guide support, duck foot bend, lifting chain) / Bend and stand set for free standing types

PUMPING FLUID

Temperature	0-40°C
Type of Fluid	Municipal sewage, water with solids

PUMP

MOTOR

Lubrication	Turbine oil (ISO VG32)
Motor Protector (built-in)	Circle thermal cut-out
Type, Poles	Induction motor, 4 poles, IP68
Insulation	Insulation class E
Phase / Voltage	3-phase / 400V / 50Hz / d.o.l.

COMPONENTS

Impeller	Vortex impeller
Shaft Seal	Double mechanical seal
Bearings	Shielded ball bearings

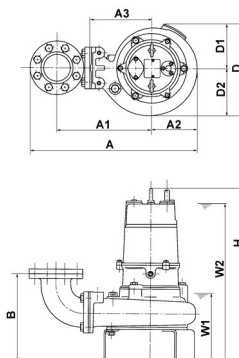
MATERIAL

Casing	Grey iron casting EN-GJL-150
Shaft	Stainless steel EN-X30Cr13
Cable	Rubber, NSSHÖU

MATERIAL

Impeller	Grey iron casting EN-GJL-200
Casing	Grey iron casting EN-GJL-200
Shaft Seal	Silicon carbide in oil bath

80UZ41.5



Model	A	A1	A2	A3	B	D	D1	D2	H	W1	W2
80UZ41.5	531	312	126	200	285	261	128	133	637	240	595

Please mind: discharge bend, duck foot bend and stand set are accessories and must be ordered separately