

Discharge bore mm	Phases	Motor output kW	Head max. m	Capacity max. l/min	Max. solid handling ø mm	PH value
50	1	0,15	5,7	190	35	4.0-11.0



GENERAL

ø Discharge bore mm	50mm
Discharge Connection	Inside thread, flange

PUMP

COMPONENTS

Impeller	Vortex impeller
Shaft Seal	Double mechanical seal
Bearings	Shielded ball bearings

MATERIAL

Impeller	Glass fibre reinforced plastic
Upper casing	Glass fibre reinforced plastic
Lower casing	Plastic
Shaft Seal	Silicon carbide in oil bath

PUMPING FLUID

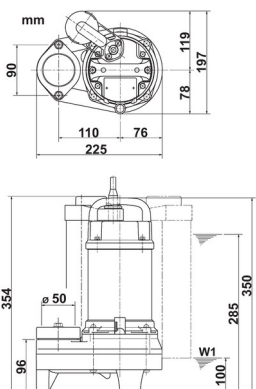
Temperature	0-40°C
Type of Fluid	Domestic sewage

MOTOR

Lubrication	Turbine oil (ISO VG32)
Motor Protector (built-in)	Circle thermal cut-out
Type, Poles	Induction motor, 2 poles, IP68
Insulation	Insulation class E
Phase / Voltage	Single phase 230V / 110V / 50Hz

MATERIAL

Casing	Stainless steel EN-X5CrNi18-10
Shaft	Stainless steel EN-X5CrNiMo17-12-2
Cable	Rubber, 10m H07RN-F



POMA

Please mind: discharge bend, duck foot bend and stand set are accessories and must be ordered separately