

Caisson tunnel, Oslo, Norway

The project:

Construction of a tunnel using caissons

Executing companies:

Skanska AS

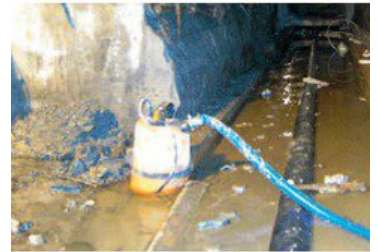
Intec Pumper AS

The problem:

During construction of a tunnel with caissons, the individual elements had to be emptied after positioning. In addition, water flowing in along the segment had to be pumped out.

Our solution:

To pump larger quantities of water, pumps from the KTV series were used. Along the segment, model LSC pumps were installed. These flat suction pumps remove water above a residual level of 1mm, allowing work to proceed in as dry an environment as possible.



Specifications KTV: <https://www.tsurumi.eu/it-CH/ktv>

Specifications LSC: <https://www.tsurumi.eu/it-CH/lsc>

In the event of abrasive and corrosive utilization, stronger wear and tear will take place naturally in certain components. With regards to the above application wear and tear can take place mainly in impeller, agitator, suction plate, shaft sleeve, oil ring, mechanical seal, pump casing, strainer, motor casing and discharge coupling. Depending on the working conditions the lifetime of those parts might vary significantly and can be shorter than the legal warranty period.

In this regard, please pay attention to our [general terms and conditions](#) that we also send to you by mail on request.

