

# Multichannel impeller with cutting mechanism



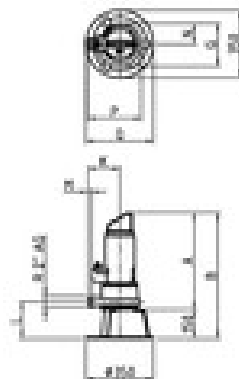
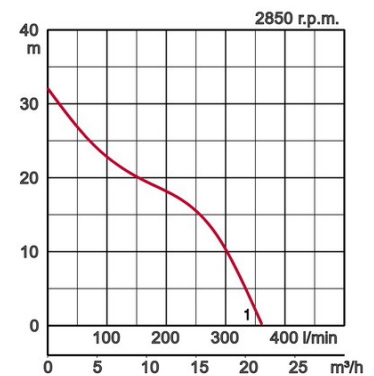
**50GY** 3-phase  
1-phase  
50Hz

## Specifications:

Model		Colour code curve	Bore mm	Power output kW	Phases	r.p.m.	Head max. m	Capacity max. l/min	Starting method	Dry weight kg without cable		
free standing	with guide rail fitting									free standing	with guide rail fitting	
50GY21.8S	TOS50GY21.8S	●	1	50	1,8	1	2850	32,1	360	condensor	42,5	38,6



ø Discharge bore mm		50mm	
Pumping Fluid	Temperature	0-35°C	
	Type of Fluid	Municipal sewage	
Pump	Components	Impeller	Multi-vane channel impeller with cutting mechanism
		Shaft Seal	Double mechanical seal
		Bearings	Shielded ball bearings
	Material	Impeller	Grey iron casting EN-GJL-250
		Casing	Grey iron casting EN-GJL-250
		Shaft Seal	SiC, upper in oil bath
Cutting device	Stainless steel EN-X39CrMo17-1		
Motor	Type, Poles		Induction motor, 2 poles, IP68
	Lubrication		Turbine oil (ISO VG32)
	Insulation		Insulation class H
	Motor Protector (built-in)		Miniature protector
	Phase / Voltage		Single phase 230V / 50Hz
	Material	Casing	Grey iron casting EN-GJL-250
		Shaft	Stainless steel EN-X5CrNiMo17-12-2
Cable		Rubber, 10m H07RN8-F	
Discharge Connection		Flange DIN/ANSI DN50 (PN10)	
Optional Accessories		Guide rail fitting "TOS" (guide support, duck foot bend, lifting chain) / Bend and stand set for free standing types	



Model	A	B	G	K	L	M	N	P	Q
50GY21.8S	468	618	223	165	191	20	107	277	350

W1: lowest running water level