

## Construction of Naples Metro, Italy

### The Project:

Extension of metro line 1 from Piazza Dante to Centro Direzionale: 5.3 km with 5 new stations

### Executing companies:

Boviar srl

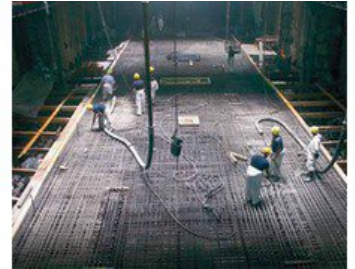
Dragflow srl

### The problem:

The construction sites lie at a depth of 35m below the city centre. High pump pressure is required for drainage.

### The solution:

Multiple Tsurumi type LH422 pumps, 22kW each, to expel water from the construction shafts.



Specifications LH: <https://www.tsurumi.eu/bg-BG/lh>

